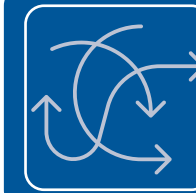


Why an NSDS?

- Novice and non-expert data users have difficulty navigating the complex data ecosystem.
- Data users don't have a place to ask open-ended questions and learn about data options based on their topic of interest.
- Accessing data is burdensome, time-consuming, and often expensive.
- Linking data requires lengthy processes to determine data ownership, requirements, and limitations on use.



Complex data ecosystem



No place to ask open-ended questions

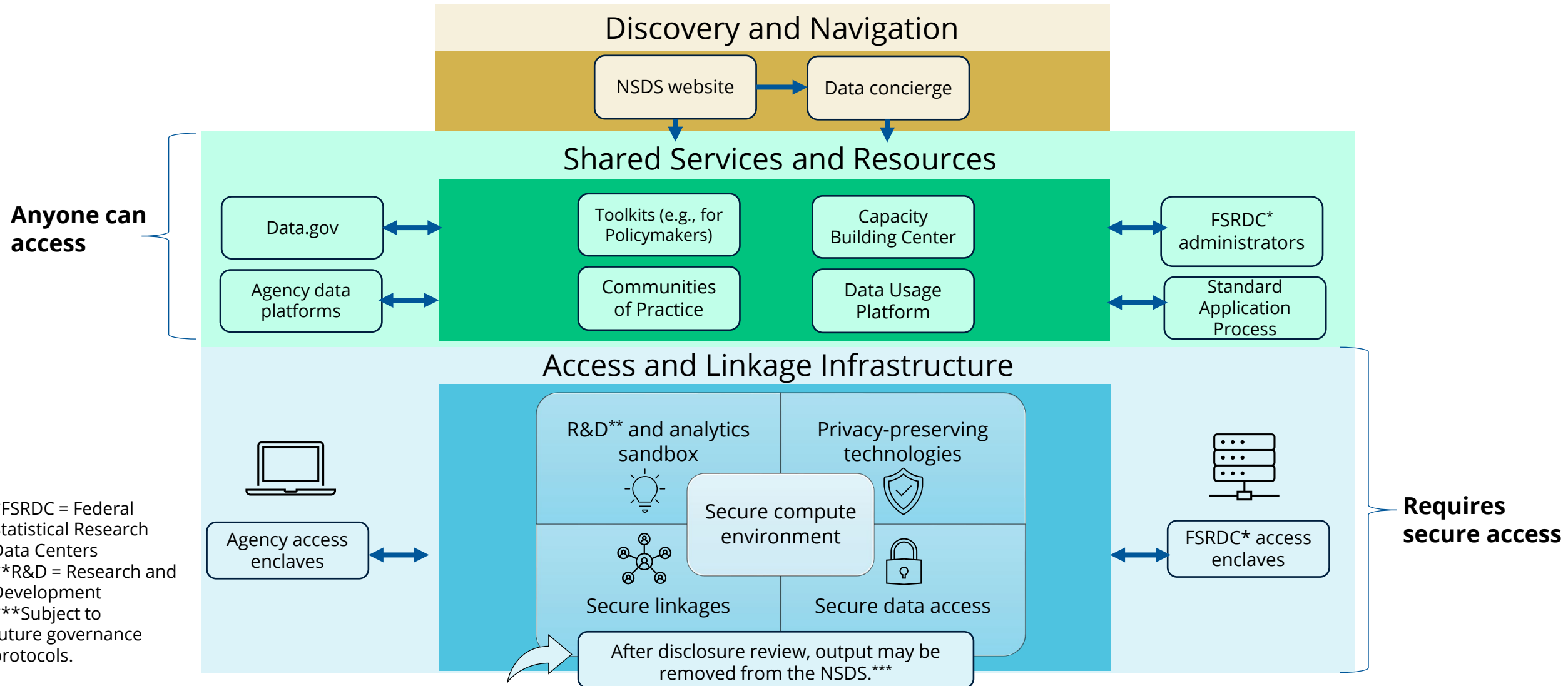


Difficult and often expensive to access data



Lengthy processes to link data

What could an NSDS look like?



Anyone can access

Requires secure access

*FSRDC = Federal Statistical Research Data Centers
 **R&D = Research and Development
 ***Subject to future governance protocols.

Questions an NSDS can help answer



How much federal funding is given to minority-serving institutions?



An NSDS data concierge guides users to public data.



How has government data on workforce education been used?



An NSDS data usage platform identifies published products using government data assets.

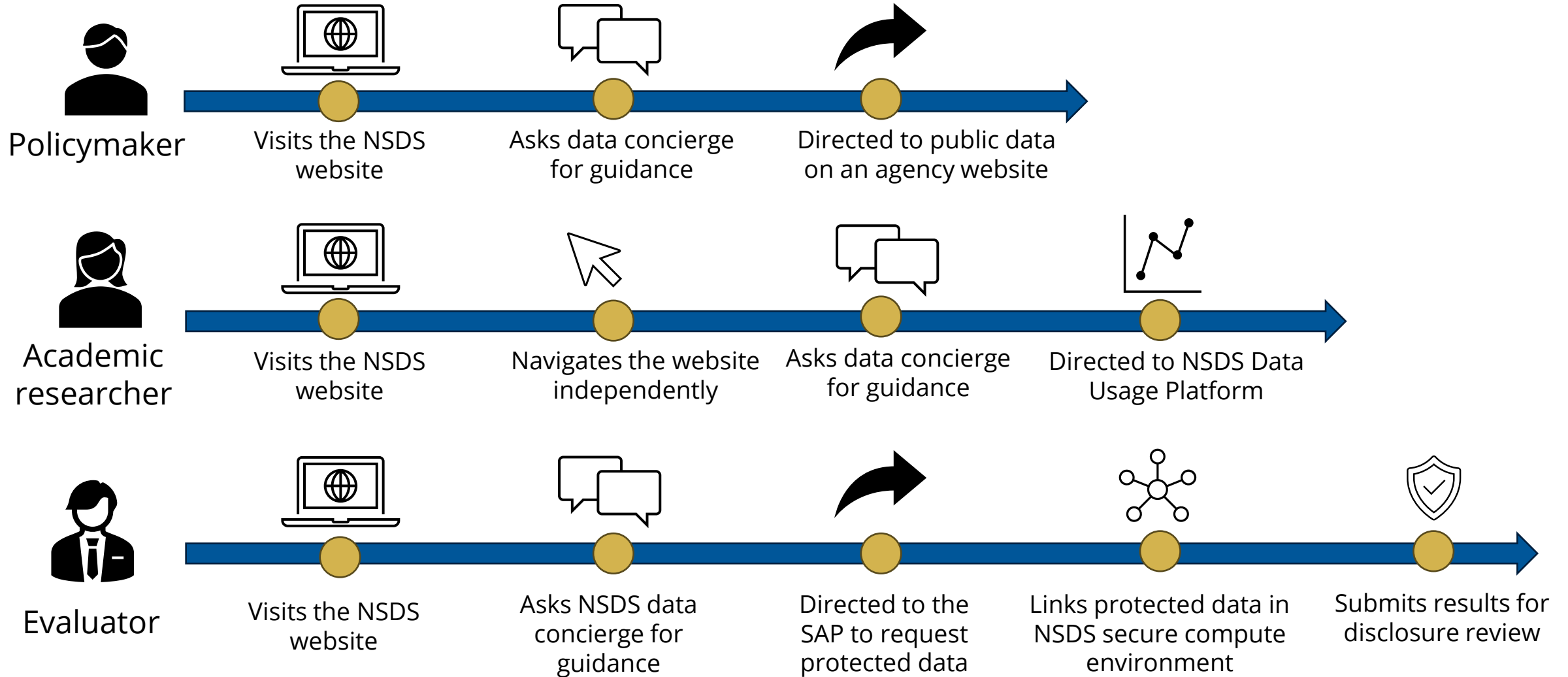


How are health outcomes influenced by access to transportation services?

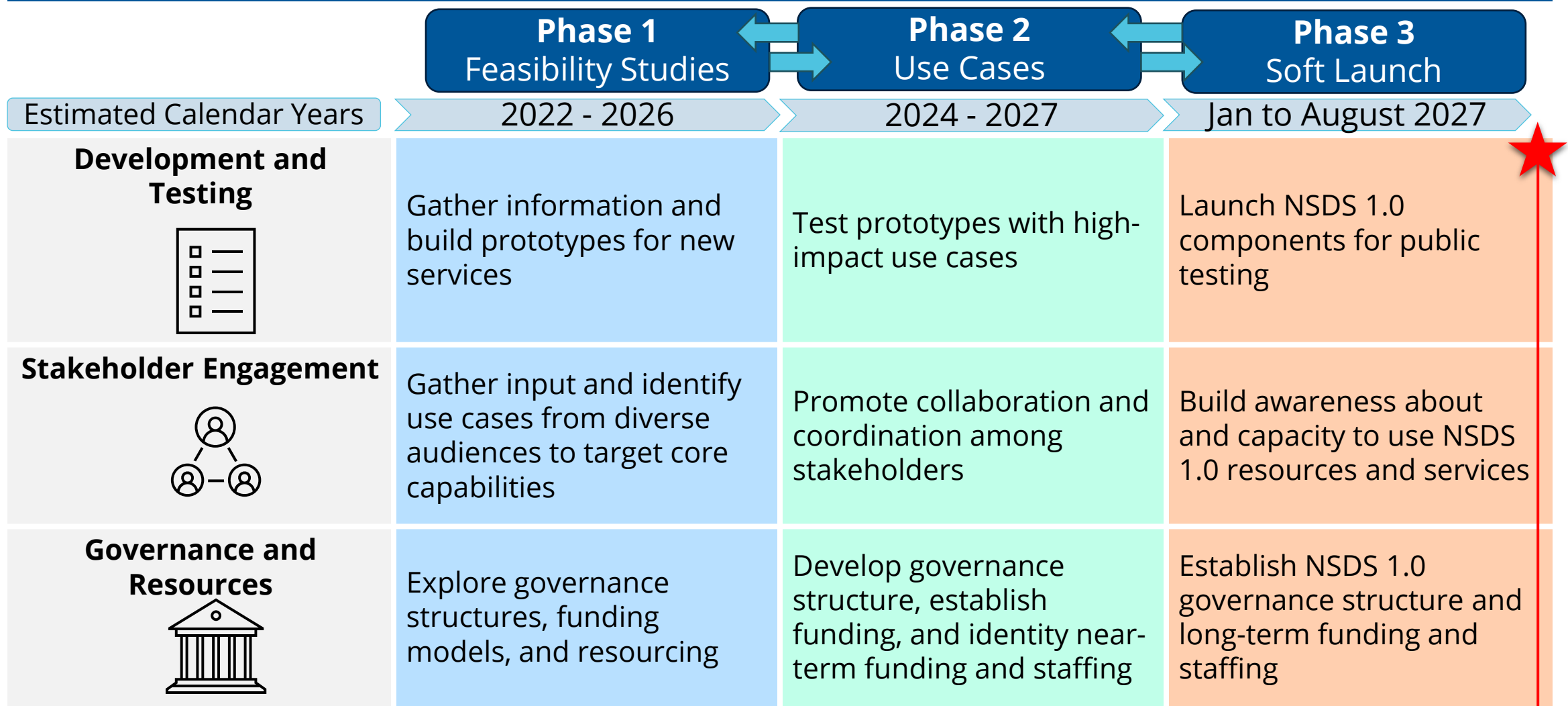


An NSDS can securely link data across two federal agencies (e.g., transportation and health data).

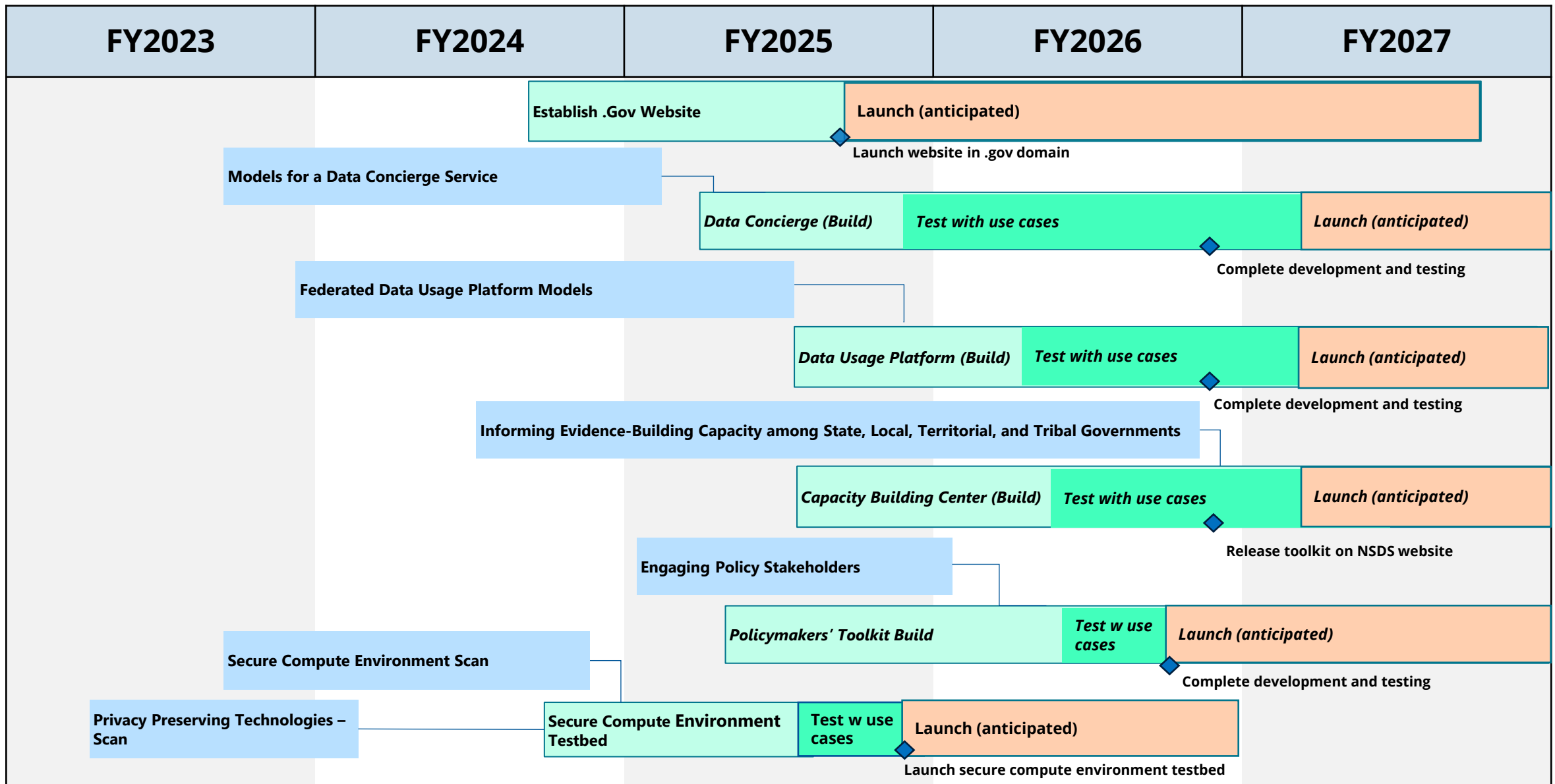
NSDS User Journey Examples



Three Phase Approach



A first version NSDS anticipated for public use August 2027



*Projects with *italicized* titles have estimated dates. These projects are pending solicitation or award.



